



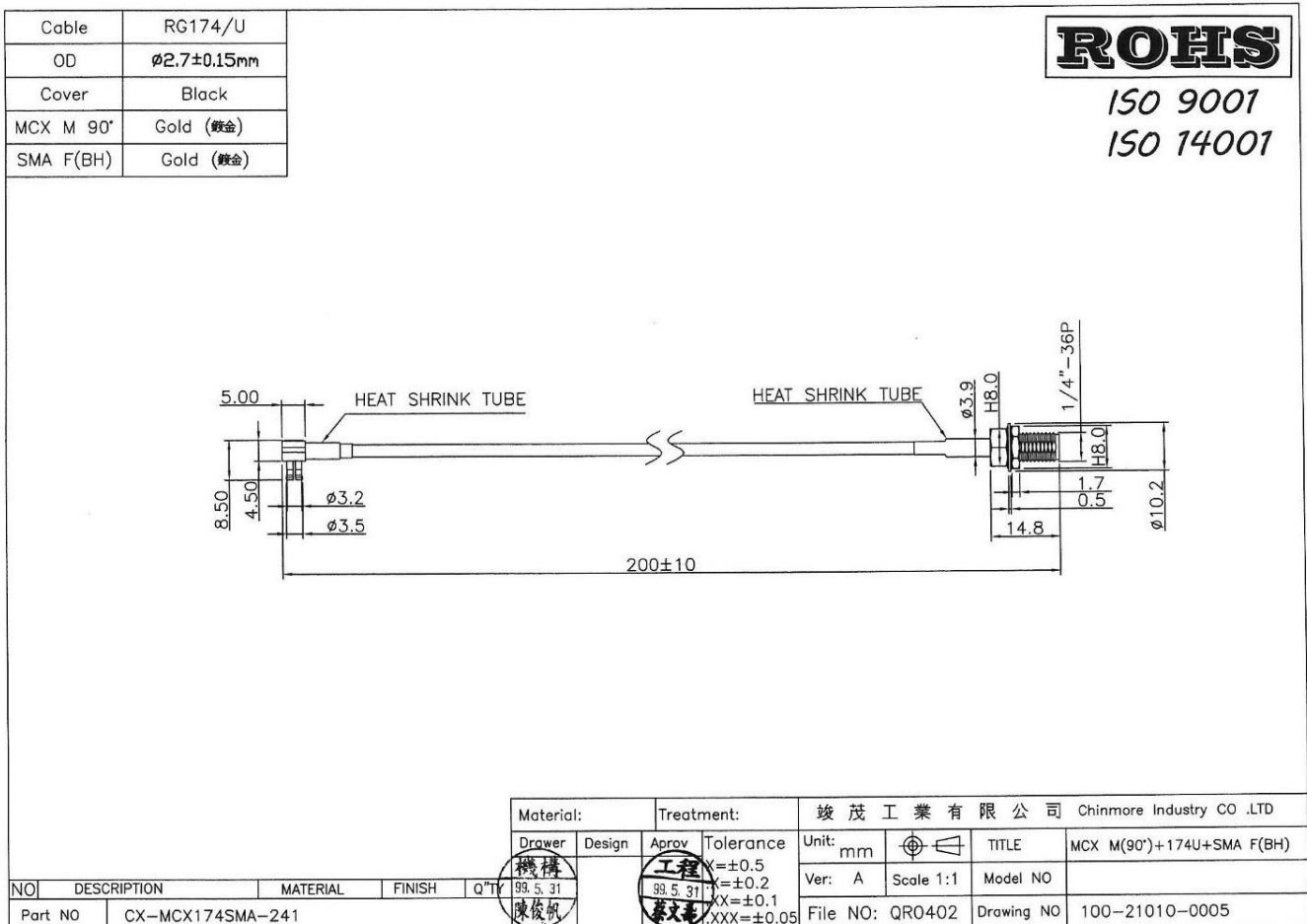
CHINMORE INDUSTRY CO.,LTD

Specification

1. Cable Assembly with RF Connector
2. *Chinmore's* No: CX-MCX174SMA-241
3. Frequency: 600MHZ~3GHz
4. VSWR: 2.0:1
5. Cable: RG-174 200mm
6. Connector: RA MCX M & SMA F Bulkhead

✧RoHS Compliant

✧ISO 9001 & ISO 14001



Frequency (MHz)	VSWR	Insertion Loss (dB)
600	1.05	-0.18
900	1.05	-0.24
1575	1.21	-0.38
1800	1.19	-0.48
2000	1.25	-0.51
2100	1.38	-0.62
2400	1.26	-0.58
2700	1.37	-0.80
3000	1.57	-1.00

TEST Report

