



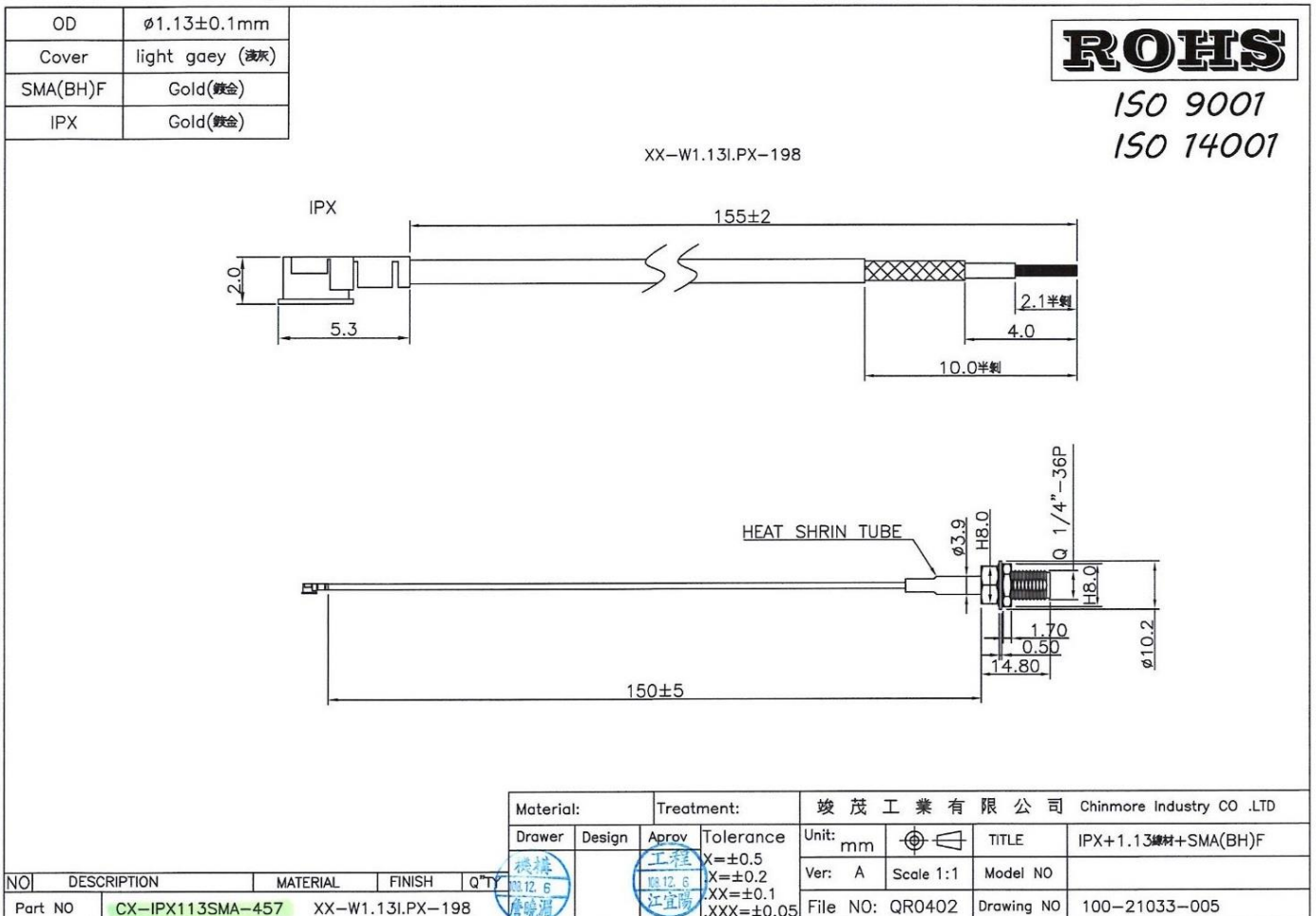
CHINMORE INDUSTRY CO.,LTD

Specification

1. Mini Coaxial Cable Assembly with RF Connector
2. *Chinmore's* No: CX-IPX113SMA-457
3. Frequency: 600Mhz~3Ghz
4. VSWR: 2.0:1
5. Cable: 1.13 150mm
6. Connector: SMA F Bulkhead Straight

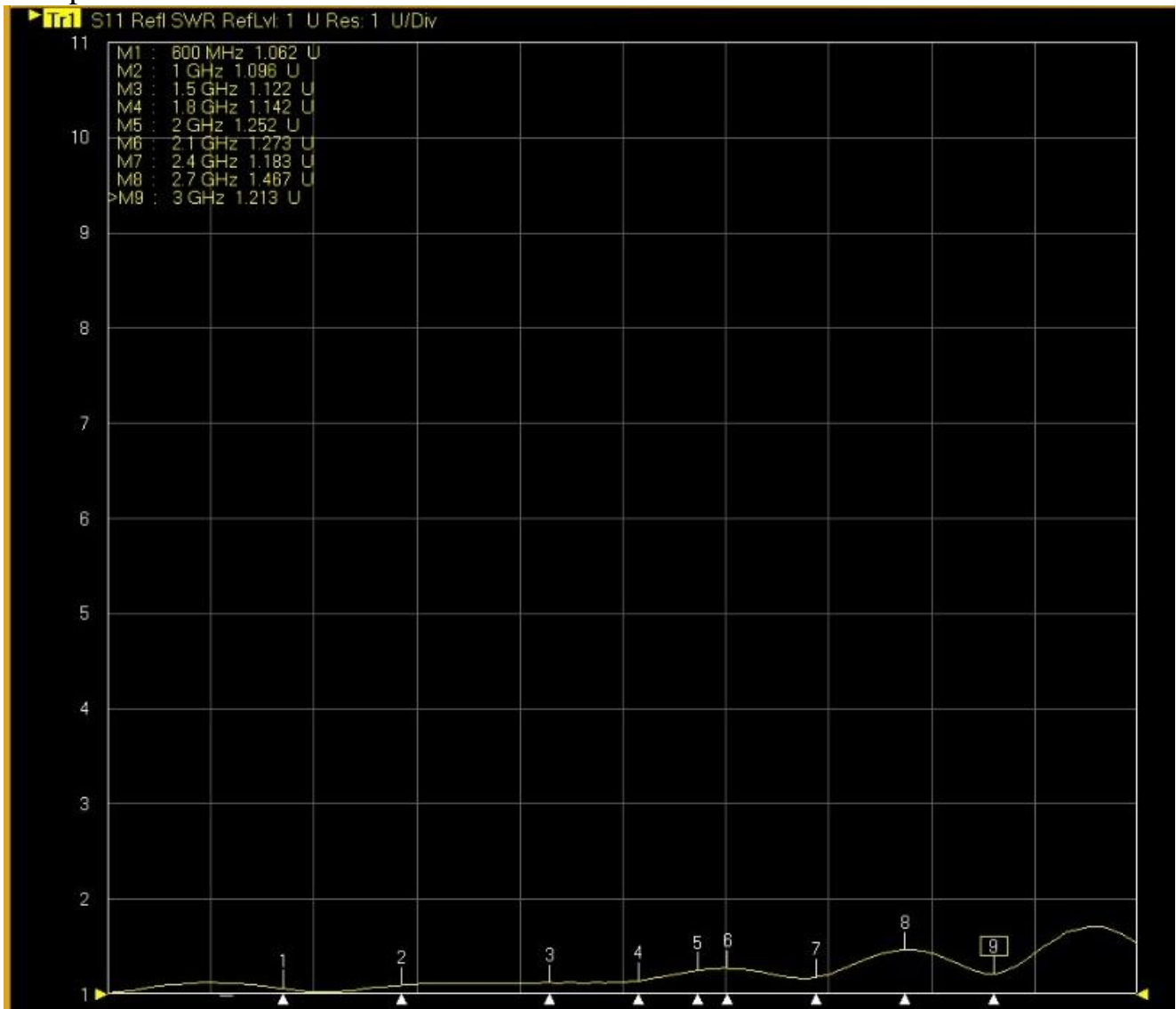
✘RoHS Compliant

✘ISO 9001 & ISO 14001



Frequency (MHz)	VSWR	Insertion Loss (dB)
600 MHz	1.06	-0.48
1000 MHz	1.09	-0.64
1500 MHz	1.12	-0.78
1800 MHz	1.14	-0.89
2000 MHz	1.25	-0.97
2100 MHz	1.27	-0.97
2400 MHz	1.18	-1.08
2700 MHz	1.46	-1.21
3000 MHz	1.21	-1.21

Test Report



Tr2 S12 Trans Load RefLvl: 0 dB Res: 10 dB/Div

