



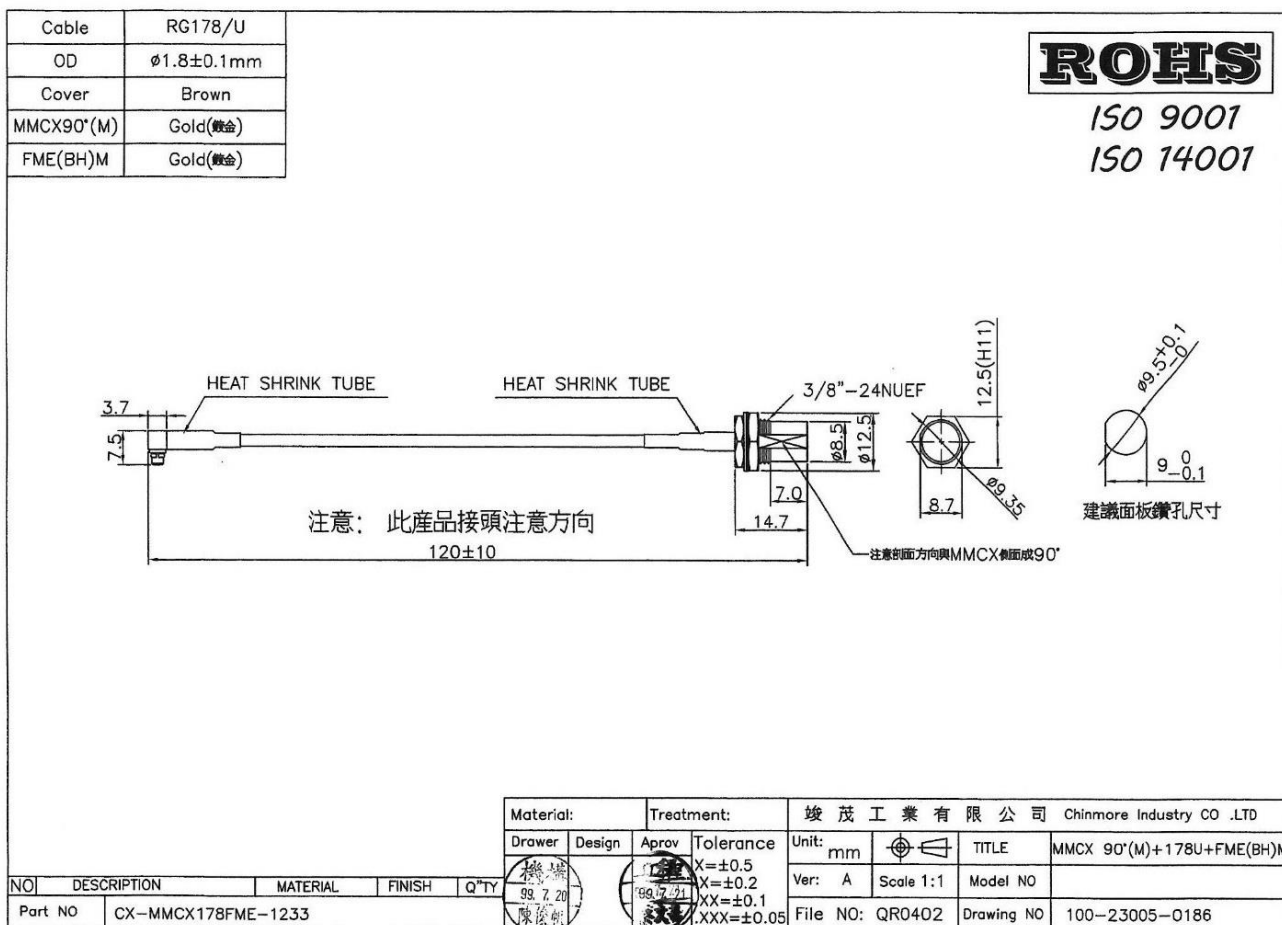
CHINMORE INDUSTRY CO.,LTD

Specification

1. Cable Assembly with RF Connector
2. *Chinmore's* No: CX-MMCX178FME-1233
3. Frequency: 600MHZ~3GHz
4. VSWR: 2.0:1
5. Cable: RG178 120mm
6. Connector: RA MMCX M& FME M Bulkhead

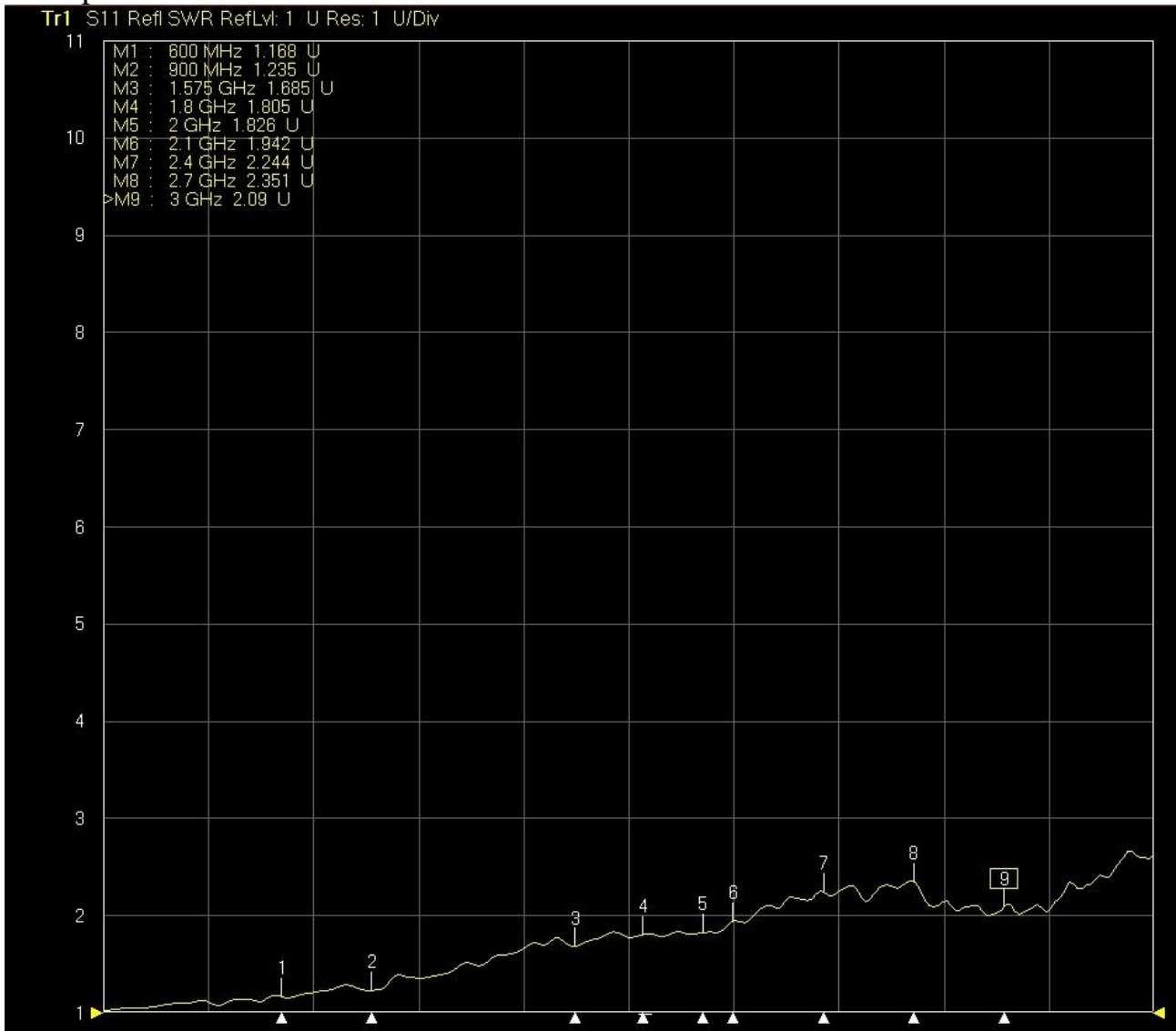
※RoHS Compliant

※ISO 9001 & ISO 14001



Frequency (MHz)	VSWR	Insertion Loss (dB)
600	1.16	-0.20
900	1.23	-0.22
1575	1.68	-0.53
1800	1.80	-0.44
2000	1.82	-0.56
2100	1.94	-0.66
2400	2.24	-0.98
2700	2.35	-0.78
3000	2.09	-0.85

TEST Report



Tr2 S12 Trans LogM RefLvl: 0 dB Res: 10 dB/Div

