



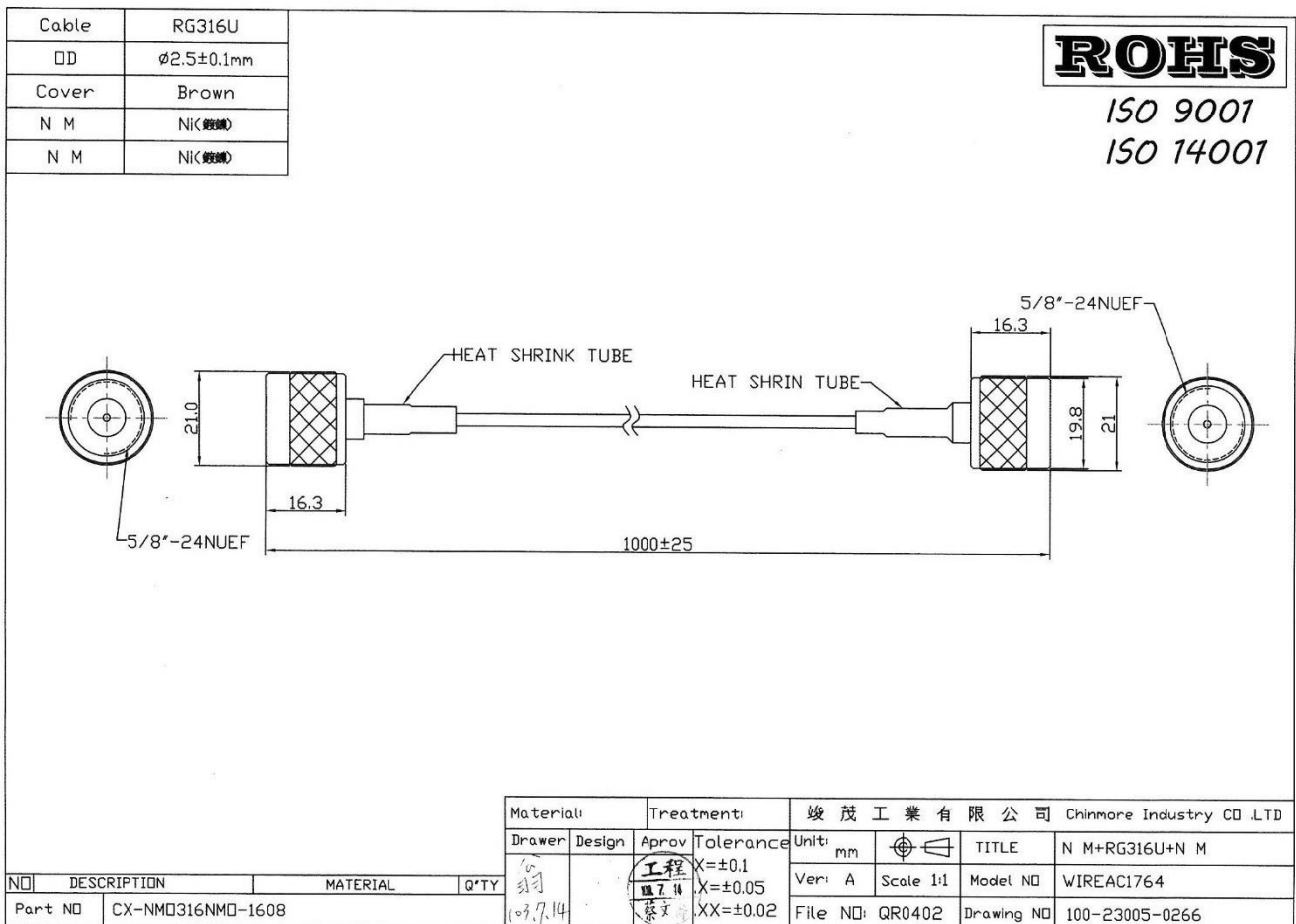
CHINMORE INDUSTRY CO.,LTD

Specification

1. Cable Assembly with RF Connector
2. Chinmore's No: CX-NM0316NM0-1608
3. Frequency: 600MHZ~3GHz
4. VSWR: 2.0:1
5. Cable: RG-316 1M
6. Connector: N M

✘RoHS Compliant

✘ISO 9001 & ISO 14001



Frequency (MHz)	VSWR	Insertion Loss (dB)
600	1.08	-0.71
900	1.71	-1.23
1575	1.85	-1.45
1800	1.21	-1.50
2000	1.9	-2.01
2100	2.38	-2.13
2400	3.06	-2.95
2700	1.79	-2.06
3000	1.69	-2.82

TEST Report

