



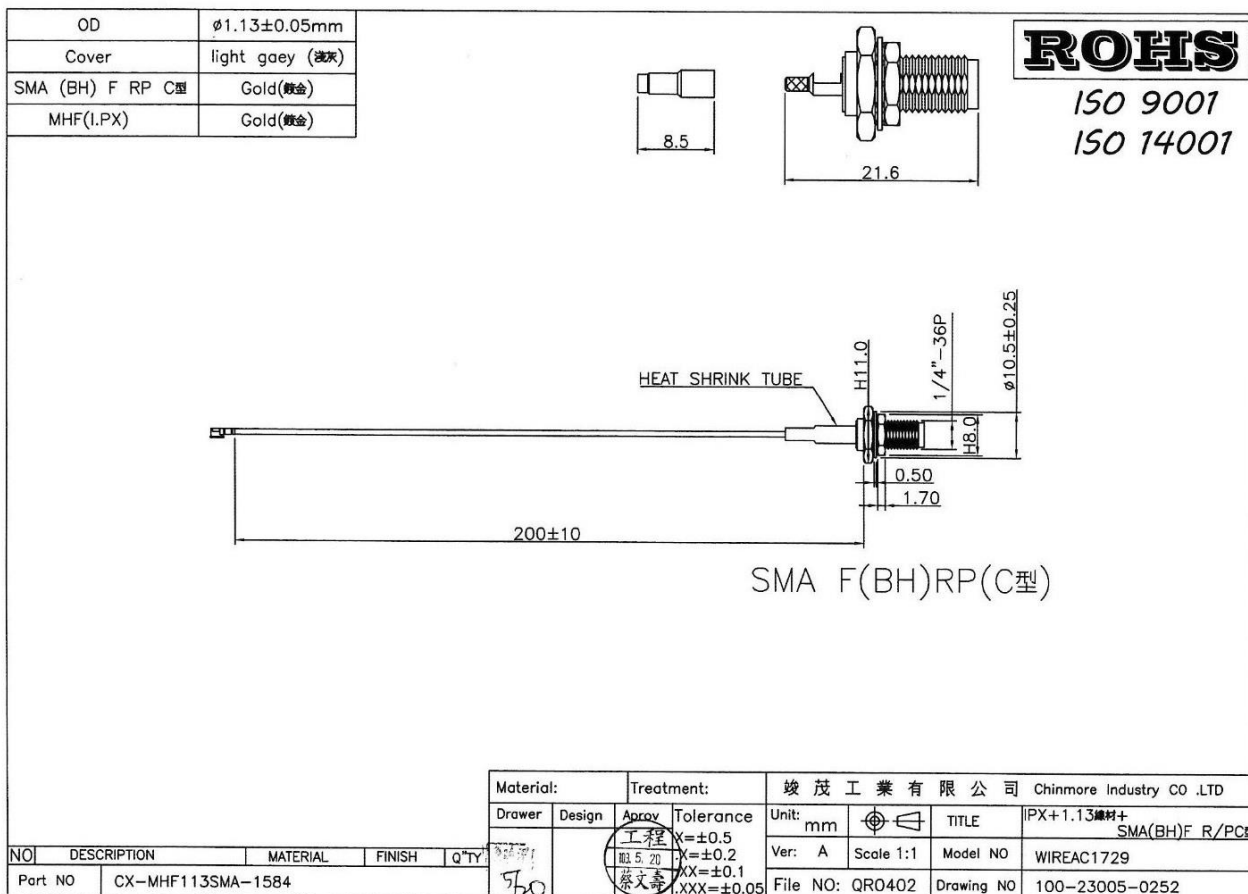
CHINMORE INDUSTRY CO.,LTD

Specification

1. Mini Coaxial Cable Assembly with RF Connector
2. *Chinmore's* No: CX-MHF113SMA-1584
3. Frequency: 600MHZ~3GHz
4. VSWR: 2.0:1
5. Cable: $\text{Ø}1.13 \pm 0.05\text{mm}$
6. Connector: RP SMA F Bulkhead C Type

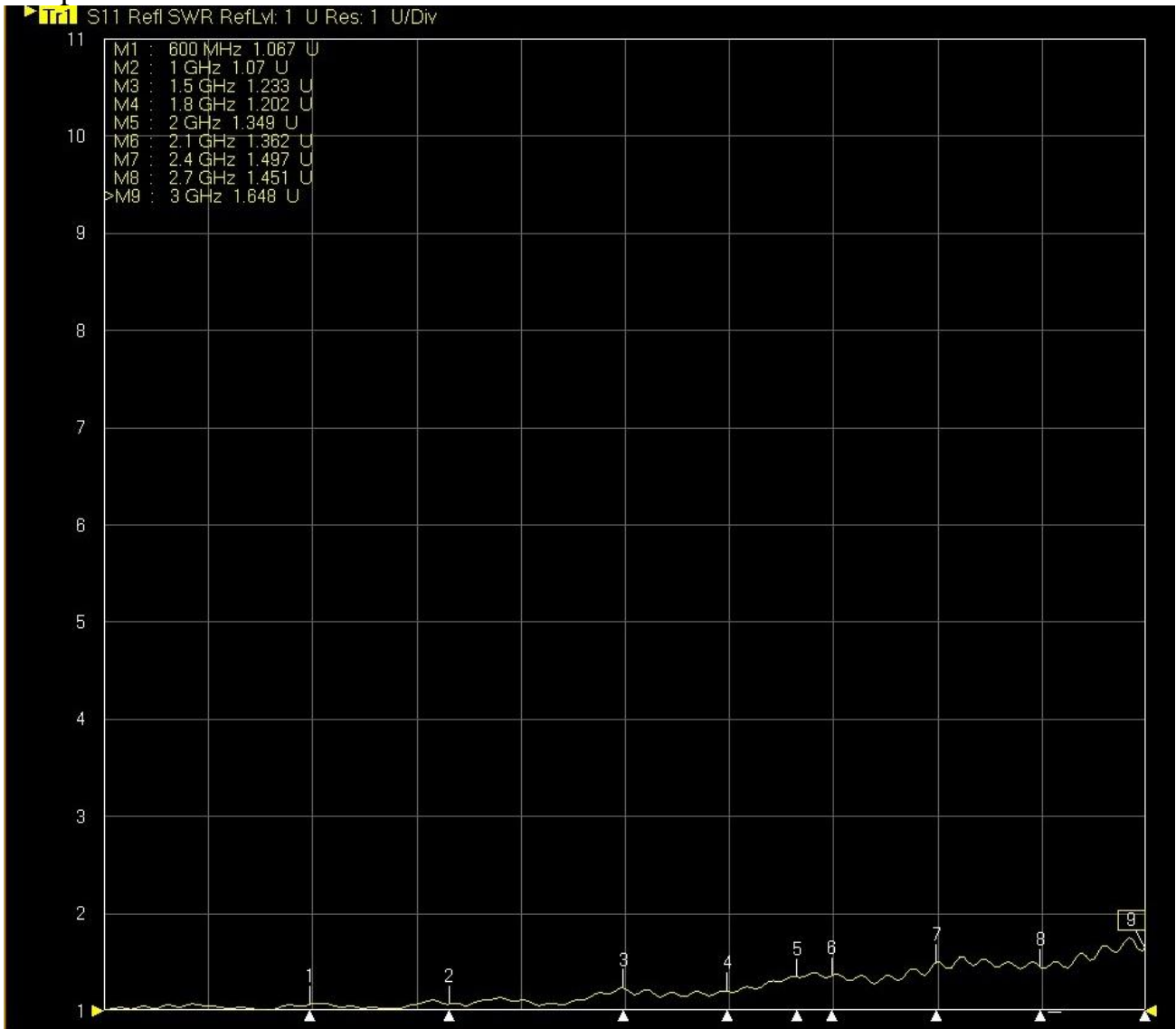
✧RoHS Compliant

✧ISO 9001 & ISO 14001



Frequency (MHz)	VSWR	Insertion Loss (dB)
600	1.06	-0.52
1000	1.07	-0.72
1500	1.23	-0.97
1800	1.20	-1.02
2000	1.34	-1.26
2100	1.36	-1.18
2400	1.49	-1.46
2700	1.45	-1.44
3000	1.64	-2.13

Test Report



Tr2 S21 Trans LodM RefLvl: 0 dB Res: 10 dB/Div

