



CHINMORE INDUSTRY CO.,LTD

*Specification*

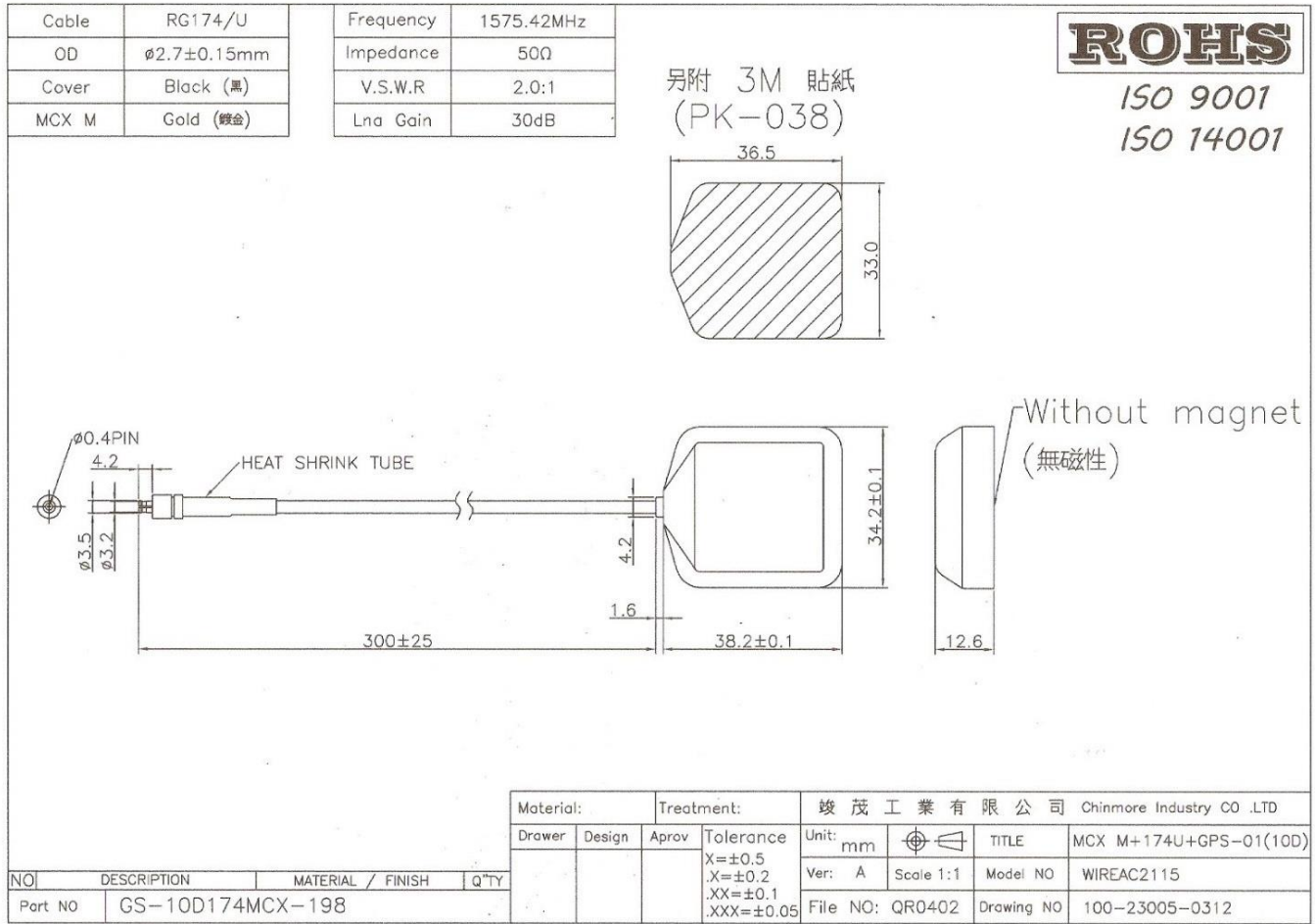
1. Product Type: GPS Antenna
2. *Chinmore's* No: GPS-01+RG-174+MCX M
3. Frequency: 1575.42 MHz
4. VSWR: 2.0:1
5. Cable: RG-174
6. Connector: MCX M
7. 3M sticker

*✘CE certification*

*✘RoHS Compliant*

*✘ISO 9001 & ISO 14001*

*✘Waterproof IP67 Rated*



## ELECTRICAL

Frequency (MHz)	Return Loss (dB)	VSWR (dB)	E-Plane (dB)	H-Plane (dB)
1575.42	-18.47	1.27	26.67	30.22

### Patch SPEC

Characteristics	Specification
Center Frequency	1575.42±1.023 MHz (when covered with a radome and measured by LNA ground plane)
Bandwidth (10dB return loss)	10 MHz min
Gain at Zenith	1 dBic typ
Gain at 10° elevation	- 5 dBic typ
Polarization	R.H.C.P
Axial Ratio	1.0 dB typ

# LNA SPEC

Characteristics	Specification
Center Frequency	1575.42 ±1.023 MHz
Gain	30~37dB (ps:3v / 32dB)
Noise Figure	1.5 dB typ (ps: 3v / 1.5dB)
Filer Out band attenuation	Dielectric filter 7dB min           fo±20MHz 20dB min         fo±50MHz 30dB min         fo±100MHz ( fo=1575.42MHz )
Output V.S.W.R	2.0 max
Voltage	DC = 2.7~5.5V
Current	DC = 9~23mA (ps: 3v / 10mA)

