



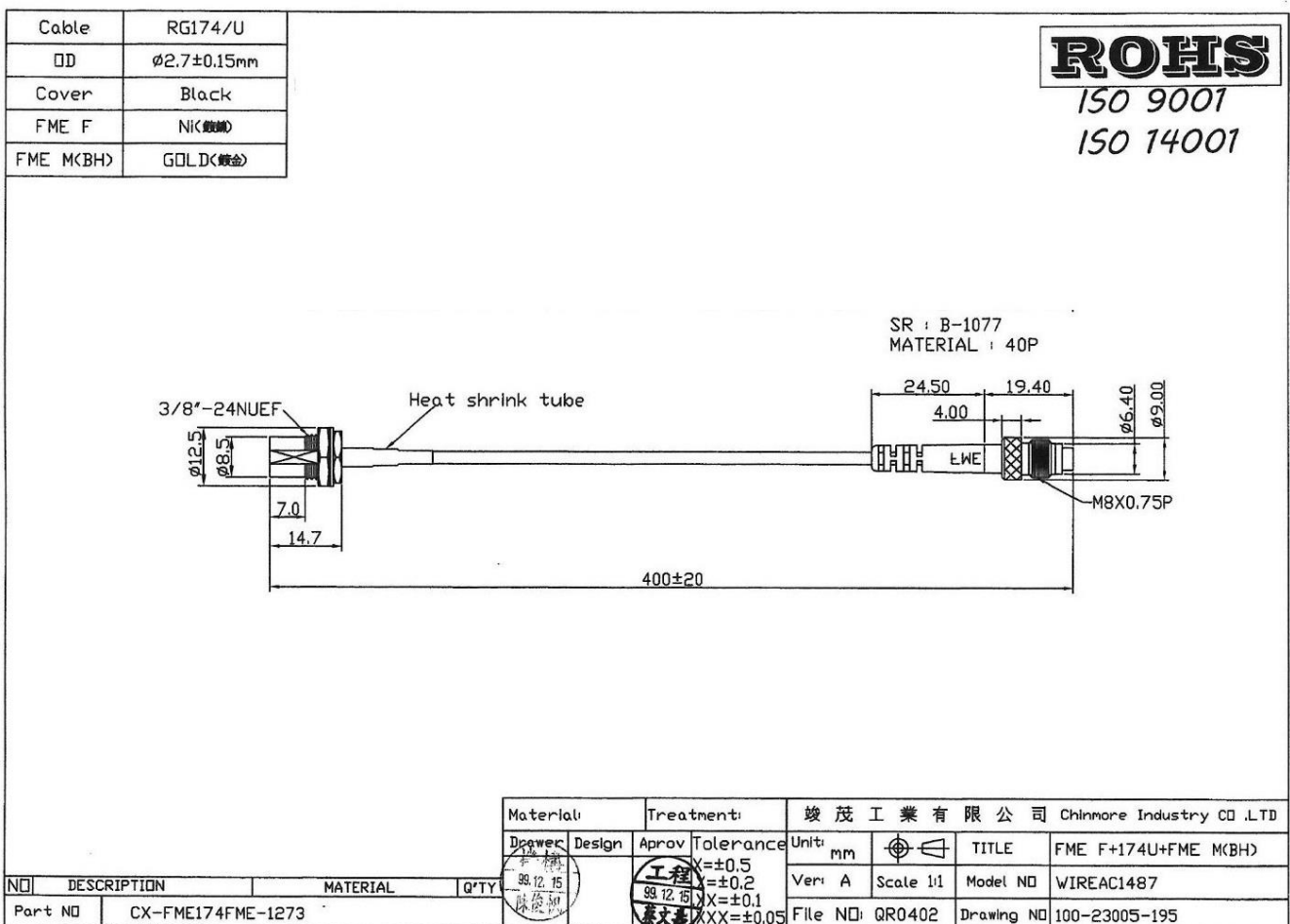
CHINMORE INDUSTRY CO.,LTD

Specification

1. Cable Assembly with RF Connector
2. *Chinmore's* No: CX-FME174FME-1273
3. Frequency: 1~3GHz
4. VSWR: 2.0:1
5. Cable: RG-174 400mm
6. Connector: FME M Bulkhead & FME F

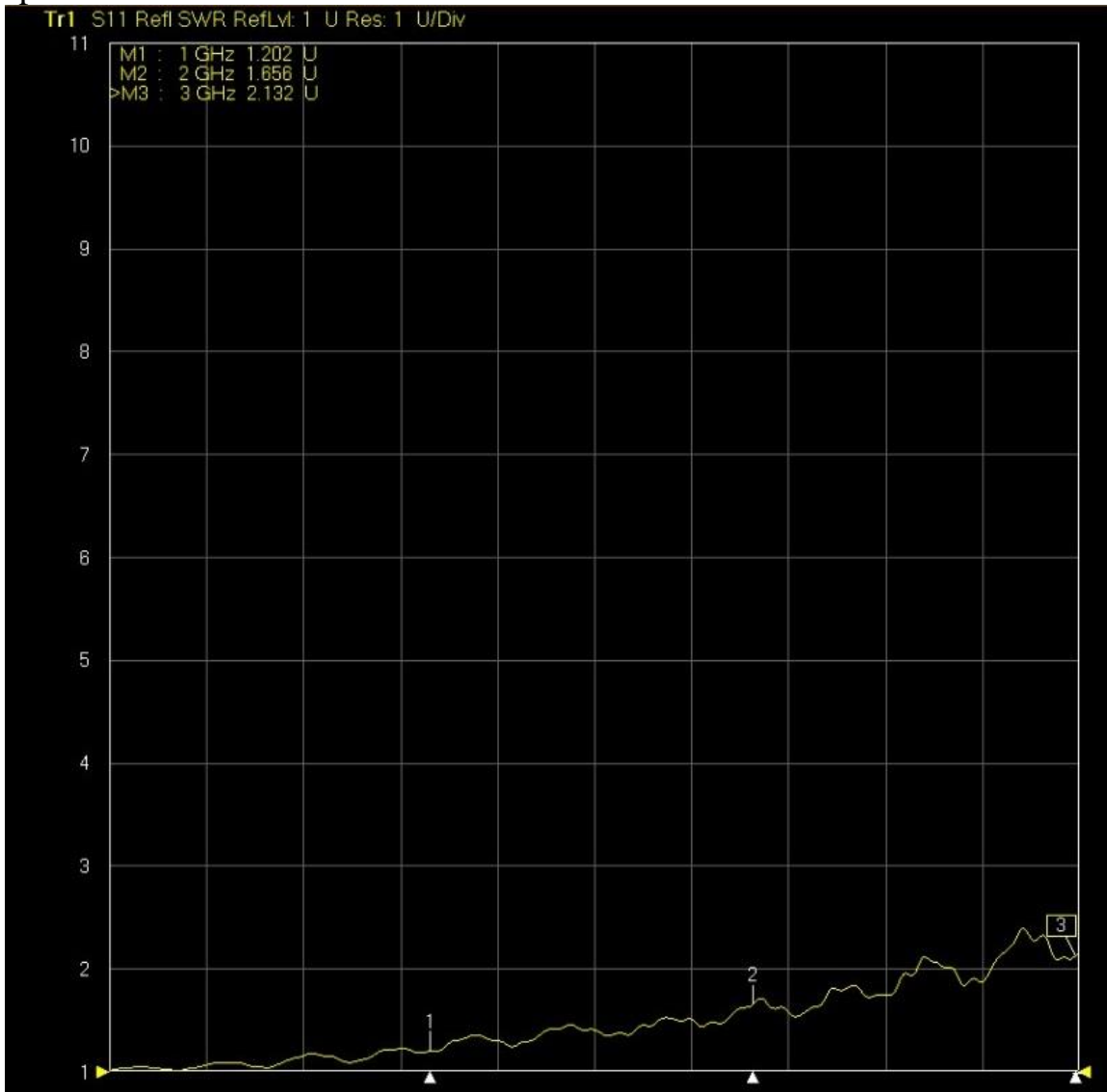
✧RoHS Compliant

✧ISO 9001 & ISO 14001



Frequency (MHz)	VSWR	Insertion Loss (dB)
1000 MHz	1.20	-0.75
2000 MHz	1.65	-1.49
3000 MHz	2.13	-2.15

TEST Report



▶ Tr2 S21 Trans LogM RefLvl: 0 dB Res: 10 dB/Div

